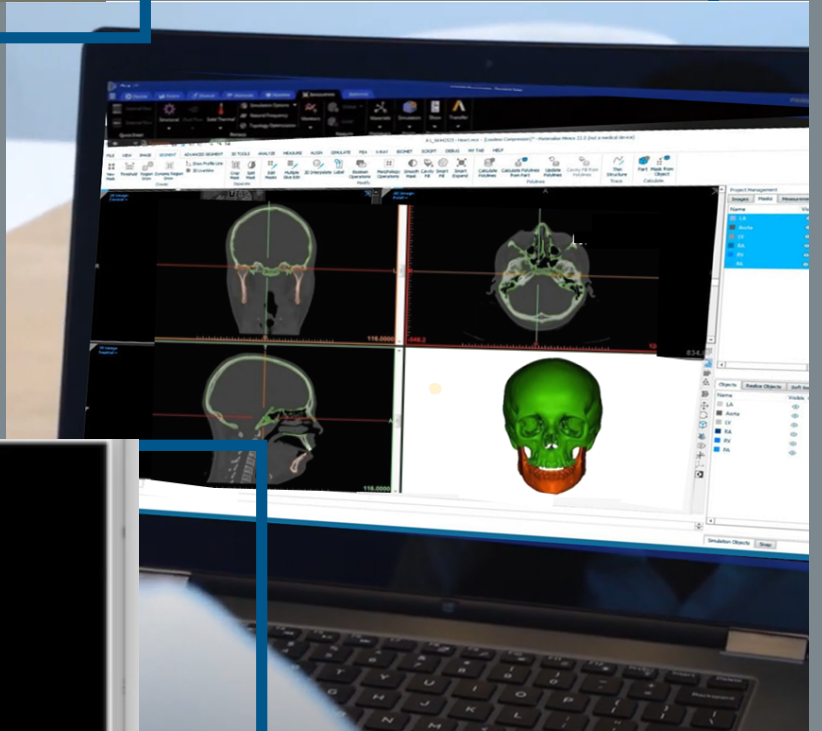


DIGITAL SURGERY & CUSTOM IMPLANTS



Digital Surgery planning

PRECISION | SAFETY



Uses:

Facial implants are required when extirpative defects result in functional impairment, significant bone and soft tissue loss that cannot be reconstituted primarily with local tissue, open communication between the oral and sinonasal cavity, or significant cosmetic deformity.

Solution includes:

Digital Surgery

Anatomical Models

Surgical Guides

Custom plates



TECHFIT
Digital Surgery

Materials

The implants are manufactured in

- Polyether ether (PEEK),
- Titanium (printed or machined)
- Poly Methyl Methacrylate (PMMA).

Microscrew Fixation of Facial Implants:

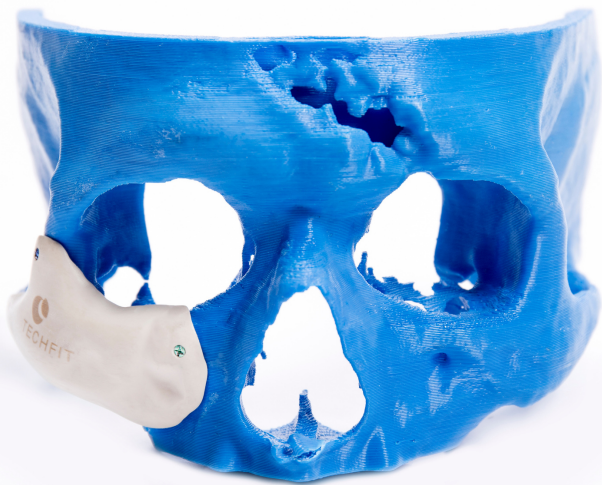
Fixation can be with 1.5 or 2.0mm screws of any commercial brand



Midface facial implant



Spacers



Mandibular angle



**FACIAL CUSTOM-MADE
IMPLANTS**



TECHFIT
Digital Surgery



www.techfit-ds.com